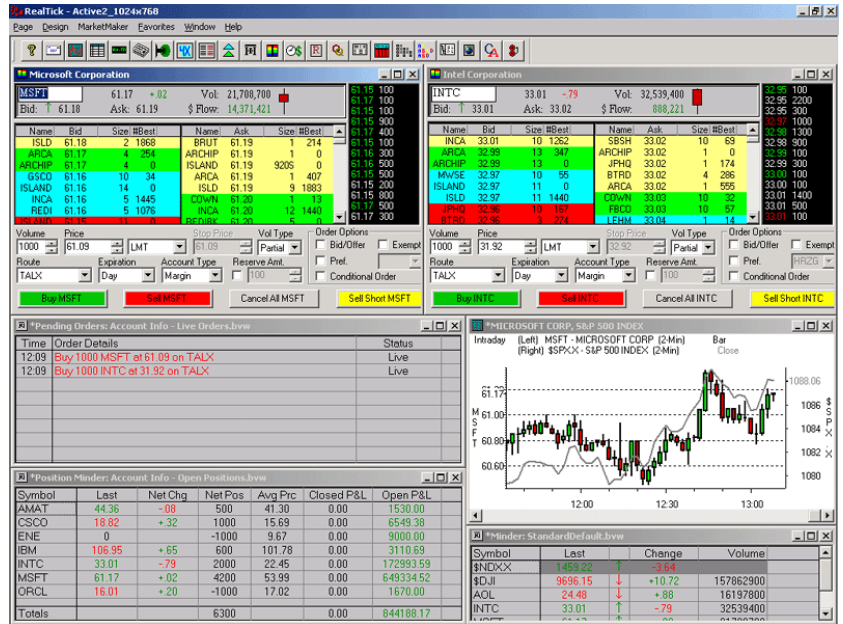


# RealTick

RealTick offers flexibility - both in its user interface and the variety of available add-ons. RealTick gives active traders the analysis tools they need to make critical decisions with confidence. It is a platform used by many professionals.

## Features

- Advanced charting capabilities;
- MarketMinder windows can display a wide array of information in spreadsheet format;
- Customizable layout and quote boards;
- Set alarms and alerts;
- Available add-ons include Oz Scanner, Hottrend and RealTick Scans;
- Streaming real-time quotes;
- Fully customizable windows and the ability to create new windows with a single click;
- Add a Ticker window to keep track of your positions and stay abreast of market activity;
- The MultiQuote screen provides detailed information, including fundamentals and price data, on a single instrument;
- Access either Vision's smart router or a robust set of algorithms; and
- Available news services include Dow Jones Newswires and Comtex wires.



## Pricing

**Monthly Platform Fee:** \$250 or free<sup>1</sup>  
**Routing Fee:** \$0.25 for futures  
 No fee for stocks and stock options

## Supported Instruments

- Futures
- Stocks
- Options on Futures
- Options on Stocks

For more information or questions, please contact Vision's Trading Applications Group at +1.866.594.2342 or [tag@visionfinancialmarkets.com](mailto:tag@visionfinancialmarkets.com).

<sup>1</sup> For any month in which your trading exceeds 500,000 shares of stock, 5,000 stock option contracts or 5,000 futures contracts (2,500 round-turns or 5,000 sides), Vision will provide RealTick free of charge. Volumes below these figures will result in a platform cost of \$250 per terminal, per month. Note that Vision's fee waiver for volume relates only to the cost of the platform. Additional features and add-ons which you elect to utilize will be passed on at cost by Vision at the then applicable monthly rate. If you have more than one terminal, the figures above need to be multiplied by the number of terminals to continue to receive the fee waiver. For example, if you have three terminals, Vision will waive the monthly cost for each terminal if your trading volume that month exceeds 1.5 million shares of stock, 15,000 stock option contracts and/or 15,000 futures contracts. If you have three terminals and trade one million shares Vision will waive the cost of two terminals and bill you for the third terminal.

<sup>2</sup> Routing fees are per contract, per side.

Trading futures and options involves substantial risk of loss and is not suitable for all investors.